

Introduction

The HMI terminals of the VT series include models with 16.7M colours TFT BackLight display touch screen from 4.3" and up to 10.1". The communication with these devices takes place through a serial Modbus RS232/485 or through the Ethernet link. All units are programmable through USB host or Ethernet and can be supplied complete with appropriate programming to interface with the turn-key applications of our drives and motion controllers.

Specifications and Models

POWER SUPPLY

24 Vdc ±20%

CONSUMPTION @24Vdc

HMIVT8051iP	HMIVT8050iE	HMIVT8071iE	HMIVT8102iE
300mA	300mA	450mA	650mA

KEYS

HMIVT8051iP	HMIVT8050iE	HMIVT8071iE	HMIVT8102iE
ANALOG RESISTIVE TOUCH SCREEN WITH 4 WIRES. RESOLUTION: CONTINUE. LIGHT TRANSMISSION: ABOUT 80%. DURABILITY: MINIMAL 1 MILLION ACTIVATIONS.			

BACKLIGHT LCD DISPLAY

HMIVT8051iP	HMIVT8050iE	HMIVT8071iE	HMIVT8102iE
4,3" TFT LCD LED BACKLIGHT 480 x 272 PX 16.7M COLOURS 500:1 CONTRAST 400 cd/m ² LIGHTNESS >30.000 HOURS MTBF BACKLIGHT	4,3" TFT LCD LED BACKLIGHT 480 x 272 PX 16M COLOURS 500:1 CONTRAST 500 cd/m ² LIGHTNESS >30.000 HOURS MTBF BACKLIGHT	7,0" TFT LCD LED BACKLIGHT 800 x 480 PX 16.7M COLOURS 500:1 CONTRAST 400 cd/m ² LIGHTNESS >30.000 HOURS MTBF BACKLIGHT	10,1" TFT LCD LED BACKLIGHT 1024 x 600 PX 16.7M COLOURS 500:1 CONTRAST 350 cd/m ² LIGHTNESS 50.000 HOURS MTBF BACKLIGHT

FRONT PANEL

HMIVT8051iP	HMIVT8050iE	HMIVT8071iE	HMIVT8102iE
FRONT MEMBRANE NEMA4 / IP65 SURFACE 4H			

CPU PROCESSOR

HMIVT8051iP	HMIVT8050iE	HMIVT8071iE	HMIVT8102iE
32 bits RISC Cortex-A8 600MHz			

MEMORIES

HMIVT8051iP	HMIVT8050iE	HMIVT8071iE	HMIVT8102iE
FLASH : 128 MB	FLASH : 128 MB	FLASH : 128 MB	FLASH : 128 MB
EEPROM RECIPES : 48 MBYTES	EEPROM RECIPES : 50 MB	EEPROM RECIPES : 50 MB	EEPROM RECIPES : 50 MBYTES
RAM DDR2 : 128 MB	RAM DDR2 : 128 MB	RAM DDR2 : 128 MB	RAM DDR2 : 128 MB

INTERFACES

HMIVT8051iP	HMIVT8050iE	HMIVT8071iE	HMIVT8102iE
1 SERIAL (COM1) RS232/RS485 (RS485 MPI SUPPORT 2 OR 4 WIRES)	1 SERIAL (COM1) RS232/RS485 (RS485 MPI SUPPORT 2 OR 4 WIRES)	1 SERIAL (COM1) RS232	1 SERIAL (COM1) RS232
1 SERIAL (COM3) RS485 (2 WIRES)	1 SERIAL (COM3) RS485 (2 WIRES)	1 SERIAL (COM2) RS485 (MPI SUPPORT 2 OR 4 WIRES)	1 SERIAL (COM2) RS485 (MPI SUPPORT 2 OR 4 WIRES)
1 SERIAL (COM3) RS485 (2 WIRES)	1 SERIAL (COM3) RS485 (2 WIRES)	1 SERIAL (COM3) RS485 (2 WIRES)	1 SERIAL (COM3) RS485 (2 WIRES)
1 USB 2.0 HOST PORT	1 USB 2.0 HOST PORT	1 USB 2.0 HOST PORT	1 USB 2.0 HOST PORT
1 FASTETHERNET 10/100 BASE-T	1 FASTETHERNET 10/100 BASE-T	1 FASTETHERNET 10/100 BASE-T	1 FASTETHERNET 10/100 BASE-T

HMI Operator Terminals Keyboard, Alphanumeric and Touch Screen



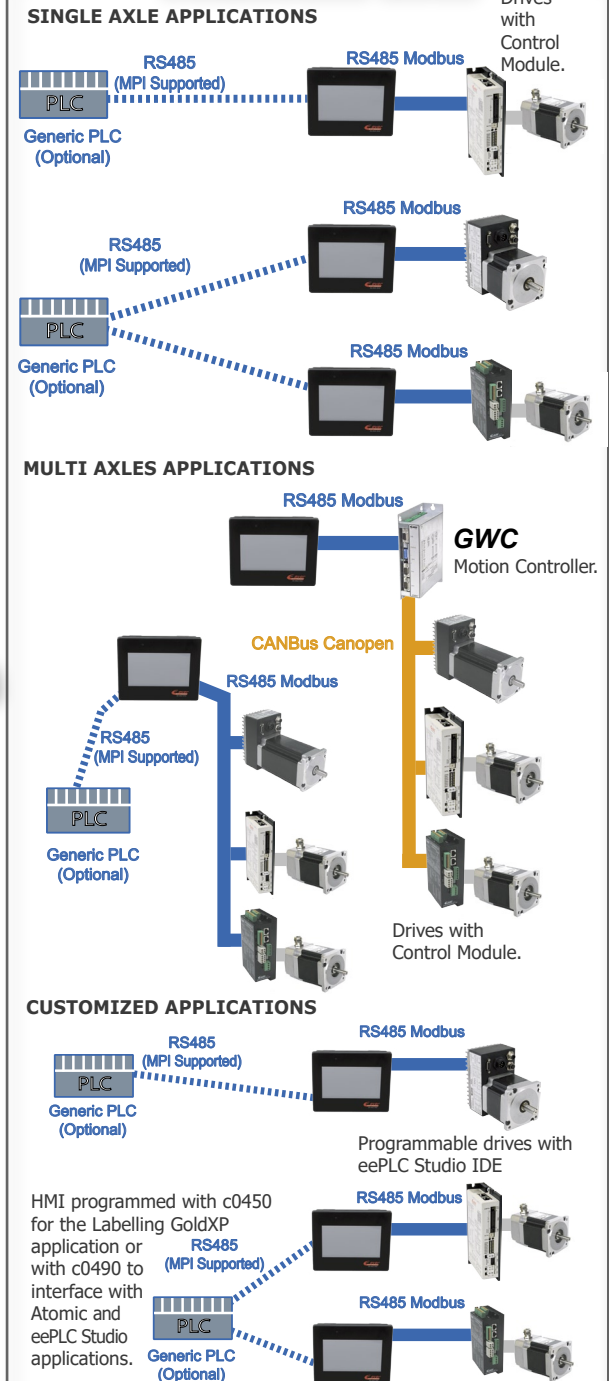
HMIVT Programmable Human Machine Interfaces

- Multiple Operation and Connection Possibilities
- Advanced Security Operations:
 - ✓ integrated watch dog functionality
 - ✓ detection of power supply failures
- Common Main Features Terminals
 - ✓ easy to connect
 - ✓ easy to program
 - ✓ conform CE and EMI standards (and UL for iE models)
 - ✓ available teleassistance for iE models
 - ✓ fan-less cooling system
 - ✓ High reliability
 - ✓ IP65 protections
 - ✓ compact size

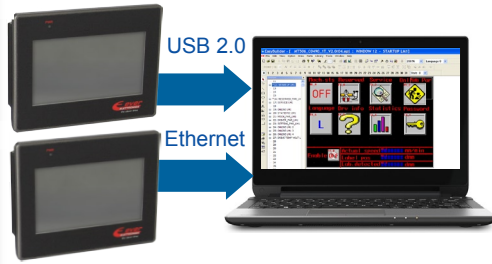


ELETRONICA PER AUTOMAZIONE INDUSTRIALE
Via del Commercio, 2/4 -9/11
Loc. S. Grato - Z.I.
26900 - LODI (LO) - Italy
Tel. +39 0371 412318 - Fax +39 0371 412367
email infoever@everelettronica.it
www.everelettronica.it

Connection Mode



Programming



HMIVT8051iP
HMIVT8050iE
HMIVT8071iE
HMIVT8102iE

The programming of the HMI unit is done by means of specific PC software interfaces used for downloading and debugging the standard and / or customized program.

The programming environments are easy to use and don't require a thorough programming knowledge. Ready to use turn-key solutions are available for the Ever Electronica applications.

Mechanical Data

Models	HMIVT8051iP	HMIVT8050iE	HMIVT8071iE	HMIVT8102iE
Dimensions				
Assembly measures				
Connectors	Power supply: - cable clamps Serial communications: - 9 pins sub-D male USB: - USB host type A female Ethernet: 1 RJ45 port	Power supply: - cable clamps Serial communications: - 9 pins sub-D male USB: - USB host type A female Ethernet: 1 RJ45 port	Power supply: - cable clamps Serial communications: - 2 ports 9 pins sub-D USB: - USB host type A female Ethernet: 1 RJ45 port	Power supply: - cable clamps Serial communications: - 2 ports 9 pins sub-D USB: - USB host type A female Ethernet: 1 RJ45 port
Environmental	Working temperature: 0°~+50°C Relative humidity: 10%~90% @40°C Shock: 10~25Hz (X,Y,Z - 2G 30 min.)	Working temperature: 0°~+50°C Relative humidity: 10%~90% @40°C Shock: 10~25Hz (X,Y,Z - 2G 30 min.)	Working temperature: 0°~+50°C Relative humidity: 10%~90% @40°C Shock: 10~25Hz (X,Y,Z - 2G 30 min.)	Working temperature: 0°~+50°C Relative humidity: 10%~90% @40°C Shock: 10~25Hz (X,Y,Z - 2G 30 min.)
Weight	about 250 g.	about 250 g.	about 600 g.	about 1,000 g.

Ordering information for HMI Terminals of the VT series

Ordering code			
HMI	Configuration	Software kit	Software kit description
HMIVT8051iP	c0450 c0490	VT_HMIVT6051i-x	CD-Rom development environment software for the device programming and RS485 half-duplex cable for connection HMIVT8051iP
HMIVT8050iE	c0450 c0490	VT_HMIVT6051i-x	CD-Rom development environment software for the device programming and RS485 half-duplex cable for connection HMIVT8050iE
HMIVT8071iE	c0450 c0490	VT_HMIVT6070i-x	CD-Rom development environment software for the device programming and RS485 half-duplex cable for connection HMIVT8071iE
HMIVT8102iE	c0450 c0490	VT_HMIVT6070i-x	CD-Rom development environment software for the device programming and RS485 half-duplex cable for connection HMIVT8102iE

Available Pre-loaded Applications

Application	Description pre-loaded application
c0450	Ready to use HMI for programming.
c0490	Ready to use HMI for eePLC Studio IDE or Atomic programming.
cxxxx	Customized applications can be realized on customer request.